

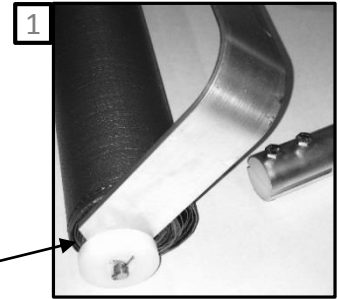
# Assembly Instructions



Tools Required: Two 7/16" wrenches or ratchets

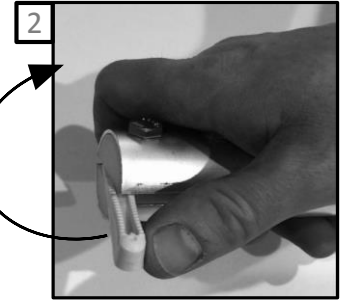
1. Locate headframe and position angled edge opposite of where headpole will be attached.

Angled Edge

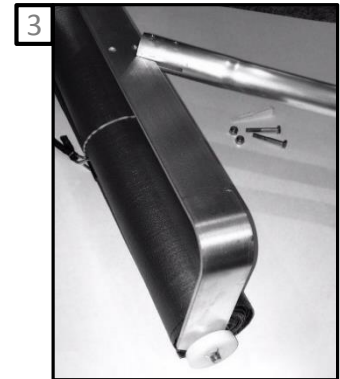


2. Remove wedge by rotating it opposite direction away from the pole. After wedge removal immediately move to step 3.

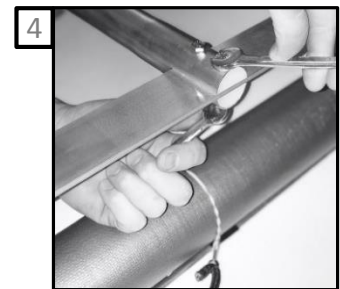
NOTE: Style of wedge may vary.



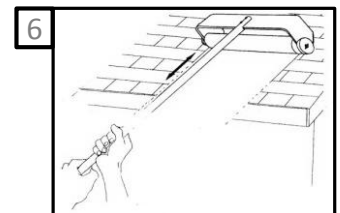
3. On same side where wedge was, insert headframe into notched pole. Being sure that single hole on pole end, opposite to notch cut, is facing up.



4. Adjust pole and headframe until the two holes align and insert bolts. Tighten nuts with wrenches and/or ratchet.



5. Attach one additional pole to the notched headframe pole by pressing in the spring button and inserting pole section till spring button pops through. The pole with warning sticker is to be assembled in the third position. Unwrap slide in head frame and insert bungee cord hook into hole located by warning sticker, third pole. All other poles are interchangeable.



6. Place wheels on bottom portion of roof and push upwards.

## Caution

Avoid use in windy conditions.

Keep Away from electric wires and antennas.

This tool is designed to be used while standing on the ground.